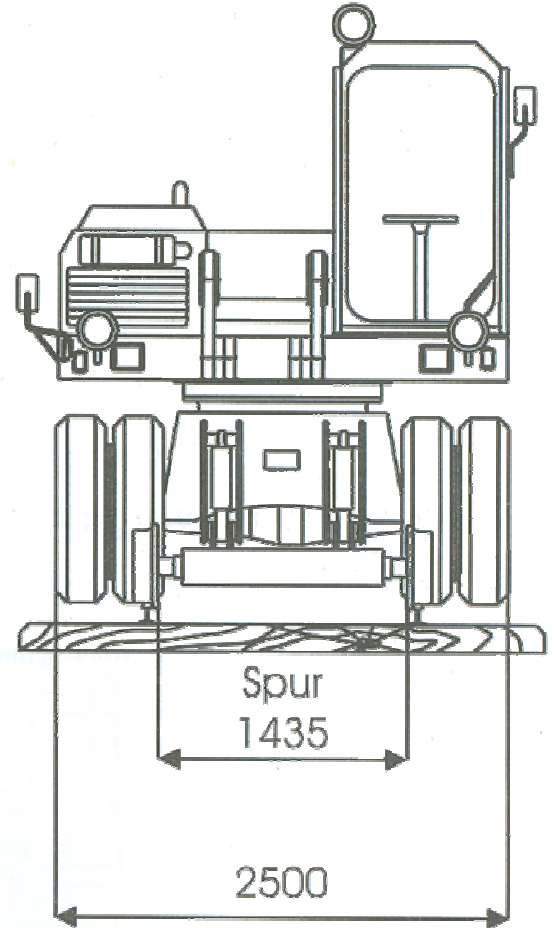
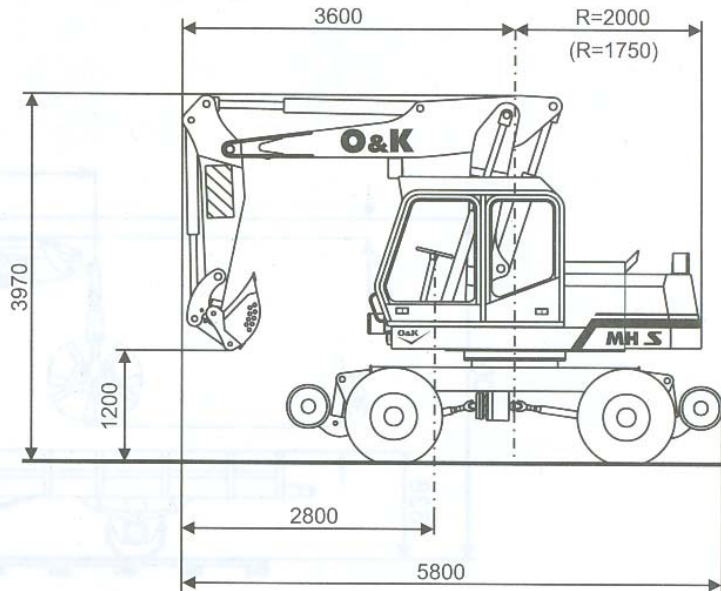


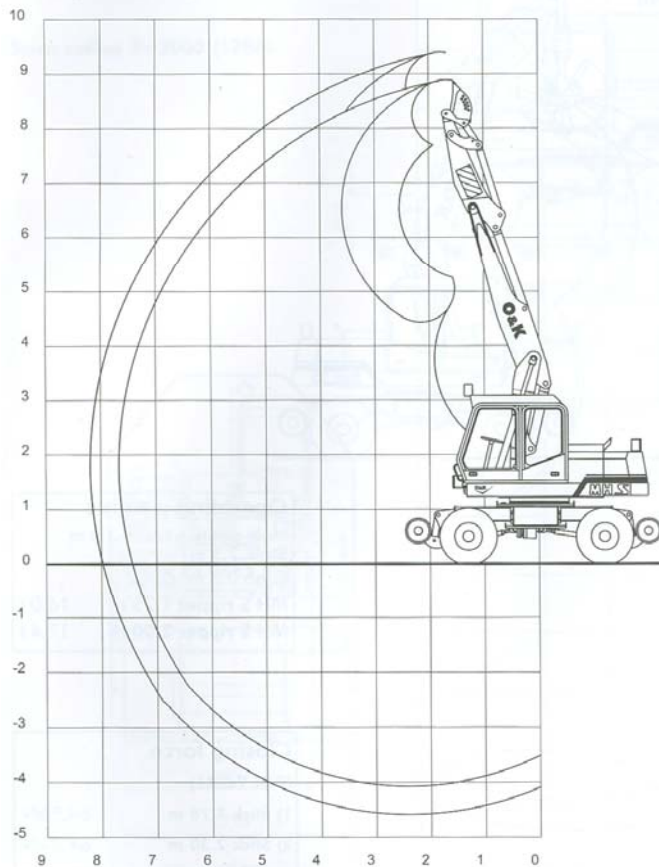
# O&K MH5 Specification



## Specifications for O&K MH5 Super Road Railer.



Working range with grab  
Multi-position boom 3.0 m



Operating weights	
Multi-position boom 3.0 m	
Stick 2.3 m	
Grab 0.4 m <sup>3</sup> CECE	
MH S ripper 1.75 m	16,0t
MH S ripper 2.00 m	17,4t

Breakout force (DIN 24086)	
	108 kN

Digging force (DIN 24086)	
1) Stick 1.78 m	91 kN
2) Stick 2.30 m	76 kN

# O&K MH5 Specification



## Sample lift chart for JS175 Super Road Railer.

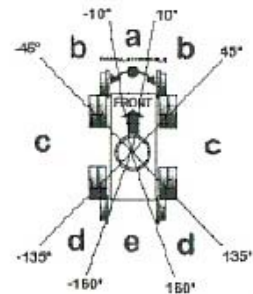


053

### LIFTWATCH 5 RATED CAPACITY INDICATOR

MACHINE	D&K MH5 KZW
SERIAL No	315520
EQUIPMENT	Hydraulically Adjustable boom + 2m30 dipper

THIS MACHINE IS EQUIPPED WITH AN LIFTWATCH 5 RCI. THIS SYSTEM FULLY COMPLIES WITH RAILTRACK STANDARD GMWRT1300.  
PLEASE READ AND UNDERSTAND THE OPERATING INSTRUCTIONS BEFORE USING THIS EQUIPMENT



#### SAFE WORKING LOADS FOR 360° LEVEL ROAD OPERATION @ 71% OF TIPPING LOAD

DUTY \ RADIUS	3.0m	3.5m	4.0m	4.5m	5.0m	5.5m	6.0m	6.5m	7.0m
1a LOCKED	7.35	6.07	5.02	4.24	3.65	3.19	2.82	2.51	2.25
1a UNLOCKED	4.36	3.27	2.67	2.25	1.91	1.65	1.43	1.25	1.10
1a STABS	7.35	6.07	5.16	4.47	4.56	3.94	3.45	3.05	2.73

#### SAFE WORKING LOADS FOR LEVEL RAIL OPERATION @ 66% OF TIPPING LOAD

DUTY \ RADIUS	3.0m	3.5m	4.0m	4.5m	5.0m	5.5m	6.0m	6.5m	7.0m
2a LOCKED	7.35	6.07	5.16	4.47	4.69	4.09	4.12	3.48	2.99
2a UNLOCKED	7.35	6.07	5.16	4.18	3.11	2.43	1.98	1.63	1.37
2b LOCKED	-	6.07	5.16	4.27	3.72	2.41	1.94	1.59	1.33
2b UNLOCKED	-	6.07	3.63	2.35	1.88	1.26	0.98	0.67	0.43
2c LOCKED	4.77	3.76	3.15	2.70	2.34	2.06	1.82	1.62	1.45
2c UNLOCKED	2.73	2.09	1.74	1.48	1.26	1.09	0.93	0.74	0.56
2d LOCKED	7.35	6.07	5.16	4.47	3.75	3.03	2.53	2.14	1.84
2d UNLOCKED	7.35	6.07	4.90	3.55	2.74	2.20	1.82	1.52	1.29
2e LOCKED	7.35	6.07	5.16	4.47	4.69	4.76	4.02	3.45	3.01
2e UNLOCKED	7.35	6.07	5.16	4.47	3.87	3.16	2.65	2.25	1.95

#### SAFE WORKING LOADS FOR 150mm CANTED OR TWISTED RAIL OPERATION @ 66% OF TIPPING LOAD

DUTY \ RADIUS	3.0m	3.5m	4.0m	4.5m	5.0m	5.5m	6.0m	6.5m	7.0m
3a LOCKED	7.35	6.07	5.16	4.47	4.69	4.96	4.09	3.45	2.97
3a UNLOCKED	7.35	6.07	5.16	4.01	2.98	2.33	1.89	1.55	1.30
3b LOCKED		6.07	5.16	4.44	3.25	2.52	2.03	1.67	1.40
3b UNLOCKED		5.03	2.42	1.54	1.07	0.68	0.38	0.14	0.00
3c LOCKED	4.30	3.37	2.83	2.42	2.10	1.83	1.62	1.43	1.28
3c UNLOCKED	2.32	1.75	1.45	1.23	1.05	0.86	0.67	0.50	0.36
3d LOCKED	7.35	6.07	5.16	4.47	3.51	2.84	2.38	1.99	1.71
3d UNLOCKED	7.35	6.07	4.40	3.18	2.45	1.96	1.61	1.34	1.13
3e LOCKED	7.35	6.07	5.16	4.47	4.69	4.56	3.85	3.30	2.88
3e UNLOCKED	7.35	6.07	5.16	4.47	3.61	2.94	2.46	2.09	1.80

**NOTES** Radius/height are given in METRES. Loads are given in TONNES, and assume that the load is suspended vertically below the bucket pin with no other equipment attached. This machine is equipped with a hydraulically adjustable boom. This allows more than one SWL for each point in the operational envelope. The values shown above are the **MAXIMUM SWL's** at a bucket pin height of 2.0 metres above the ground.